

Q&A

CPR and Residence Permit

CPR NUMBER – ALL STUDENTS

- CPR number (Central Person Register) – issued by Citizen Service (Borgerservice)
- Residents in Denmark are required to have a CPR number (personal, unique ID nr)
- Gives a right to a range of services in Denmark: health system, libraries, banks etc.
- Make sure of health insurance coverage until valid Danish health insurance
- If you need to see a doctor before having obtained CPR nr, contact IC or any doctor for a fee

Your temporary AU CPR number is not a real/valid CPR number! When you receive your permanent CPR number from the CPR-Office, please notify the Study Administration.

You might encounter deadlines to show up when applying – please disregard them!



Dear

Once you arrive in Denmark, you must register with the local authorities. Please check out the application instructions below carefully.

In this email you can also find an invitation to an **online CPR Q&A session on Monday 19 January 2026 at 9:00 – 10:00 or Monday 26 January 2026 at 9:00 – 10:00.**

Students from outside the EU/EEA countries

1. Submit your online application for a Danish CPR number
2. Book and attend appointment with Citizen Service on **Wednesday 28 January 2026**
3. Activate your MitID:

[Students from outside the EU/EEA countries / Application instructions](#)

Online Q&A session

If you any have questions about the application process or if you want to learn more about why you need a [Danish CPR number](#) and a [MitID](#), then please join our online Q&A session.

Date and time: Monday 19 January 2026 at 9:00 – 10:00 AM CEST or Monday 26 January at 09:00 – 10:00 AM CEST.

[Link to TEAMS / Monday 19 January 2026 at 9:00 - 10:00 AM CEST](#)

[Link to TEAMS / Monday 26 January 2026 at 09:00 - 10:00 AM CEST](#)

Students from the Nordic countries

1. Submit your online application for a Danish CPR number
2. Book and attend appointment with Citizen Service **Wednesday 28 January 2026**
3. Activate your MitID:

[Students from Nordic countries / Application instructions](#)

Students from EU/EEA countries

1. Submit your online application for an EU residence certificate
2. Submit your online application for a Danish CPR number
3. Book and attend appointment with Citizen Service on **Tuesday 27 January 2026**
4. Activate your MitID:

[Students from EU/EEA countries / Application instructions](#)

All best,

AU international Team
Aarhus University

Registration of entry for new students in Aarhus



Nordic students from Norway, Sweden, Finland, Iceland, and the Faroe Islands

The guide below tells you how to obtain a CPR number and MitID as a student from one of the Nordic countries residing in Denmark.



EU, EEA and Swiss students

As a student from the EU, EEA, or Switzerland you must follow the steps below to register for an EU residence document and a CPR number.

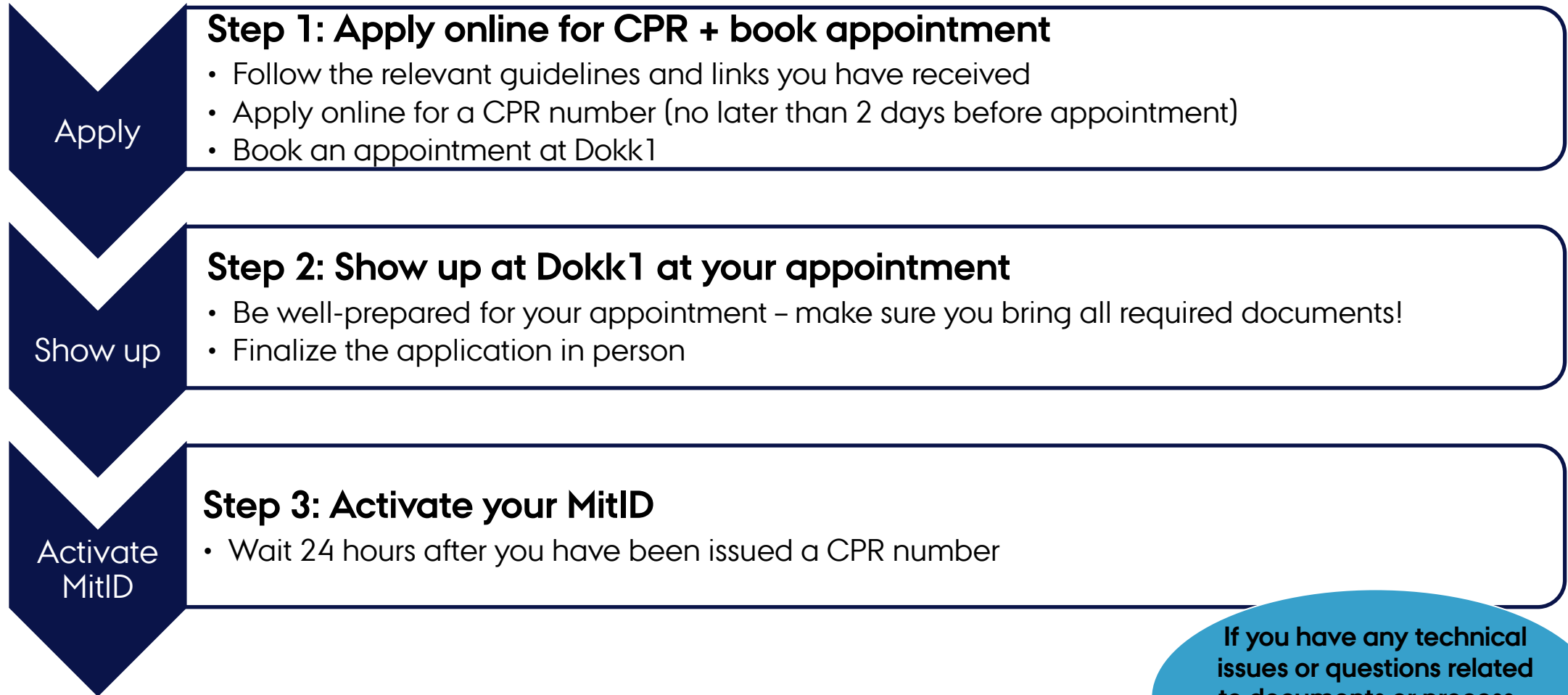


Students from outside the EU/EEA

The guide below tells you how to obtain a CPR number and MitID as a student from outside the EU/EEA or Switzerland residing in Denmark. You must have a residence permit to be issued a CPR number.



CPR FOR NON-EU AND NORDIC



If you have any technical issues or questions related to documents or process – please contact **Citizen Service**

RESIDENCE CERTIFICATE AND CPR FOR EU

Apply for EU
residence
certificate

Step 1: Apply online for EU residence document

- Follow the relevant guidelines and links you have received by e-mail
- Apply online for your EU residence document (no later than 2 days before appointment)

Apply for
CPR number

Step 2: Apply online for CPR

- Follow the guidelines and links you have received by e-mail
- Apply for a CPR number online (no later than 2 days before appointment)
- Book an appointment at Dokk1

Show up

Step 3: Show up at Dokk1 at your appointment

- Be well-prepared for your appointment – make sure you bring alle required documents!
- Finalize the applications in person

Activate
MitID

Step 4: Activate your MitID

- Wait 24 hours after you have been issued a CPR number

If you have any technical issues or questions related to documents or process – please contact SIRI for EU residence certificate and Citizen Service

MITID APP – DIGITAL SIGNATURE

MitID is your personal secure login for:

- Using public online self-service solutions (many in Denmark)
- Online banking (getting a bank account)
- Verifying your identity on a range of public and private websites (including doctor)
- Accessing your digital post from public authorities
- Signing documents digitally

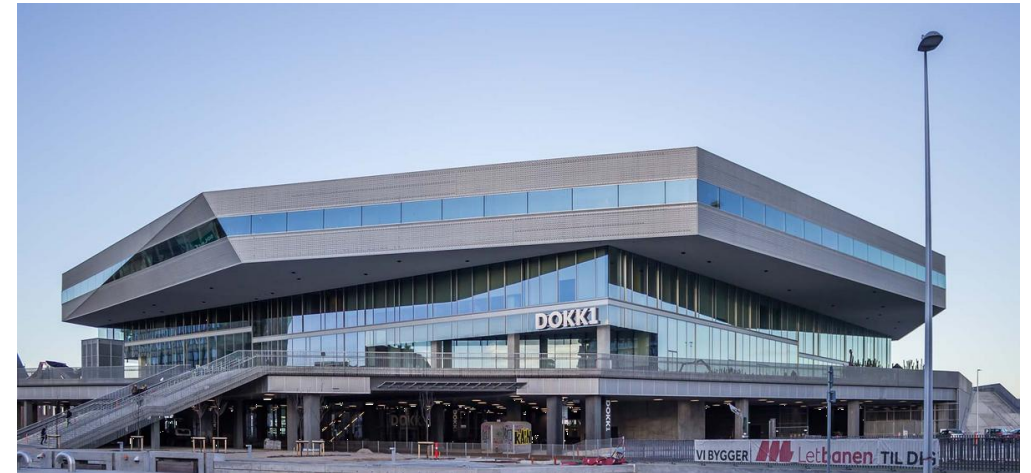
You will find information on how to get MitID on the relevant guide and link for you. If you have trouble activating MitID, please read the guide on how to get help at Citizen Services.

WHERE TO GO?

Citizen Services, DOKK1, Hack Kampmanns Plads 2, 8000 Aarhus C

If you have questions about the application process or face any technical problems, please contact Citizen Service, Dokk1 directly:

+45 89 40 22 22 (Mon - Wed 8-16, Thur 8-18, Fri 8-16)



AARHUS UNIVERSITY

19. JANUARY 2026

LINETTE HEIBØLL HAUGE
INTERNATIONAL COORDINATOR



4 IMPORTANT THINGS TO REMEMBER

1. If change of address **AFTER** you apply for CPR: You must report it to Citizen Service within 14 days (otherwise you can receive a fine).
2. Put your name on your mailbox to be able to receive your health insurance card with CPR number (yellow card) and residence card (pink card).
3. You choose a family doctor at Dokk1. This doctor will be your doctor during your stay and the address/contact info will appear on your yellow card.
4. When you receive your permanent CPR number, please notify the Study Administration using this web form: <https://studerende.au.dk/en/it-support/change-of-cpr-number> or Google “Temporary CPR number AU”

REGISTER FOR CPR NUMBER AND EU RESIDENCE CERTIFICATE

FOR EU-STUDENTS: Book for January 27

FOR NON-EU STUDENTS: Book for January
28

FOR NORDIC STUDENTS: Book for January
28



QUESTIONS?



AARHUS
UNIVERSITY