



ENGINEERING OPEN DAY 2025

PROGRAMME

- **Welcome** by Nina AU International Centre
- **How to apply for admission** by Mia Borg-Asmussen, Admission Office
- Behind the scenes Kaspar Bruus Bjerre, Mette Kastberg Lillemose, Dorte Jespersen

Webinar rules

- **Questions:** Write in the Q&A – **not** in the chat
- **Be patient!** Your answer may be answered during the webinar
- Your answer may be given in writing or orally

Follow up and more info

- You will receive an email with link to presentations



HOW TO APPLY FOR

MASTER'S DEGREE PROGRAMMES TAUGHT IN ENGLISH

CONTENT

Admission requirements

Documentation

Application form

Assessment process



PROGRAMMES AT THE FEBRUARY INTAKE

Biotechnology and Chemical Engineering (MSc in Engineering)

Computer Engineering (MSc in Engineering)

Civil and Architectural Engineering (MSc in Engineering)

Electrical Engineering (MSc in Engineering)

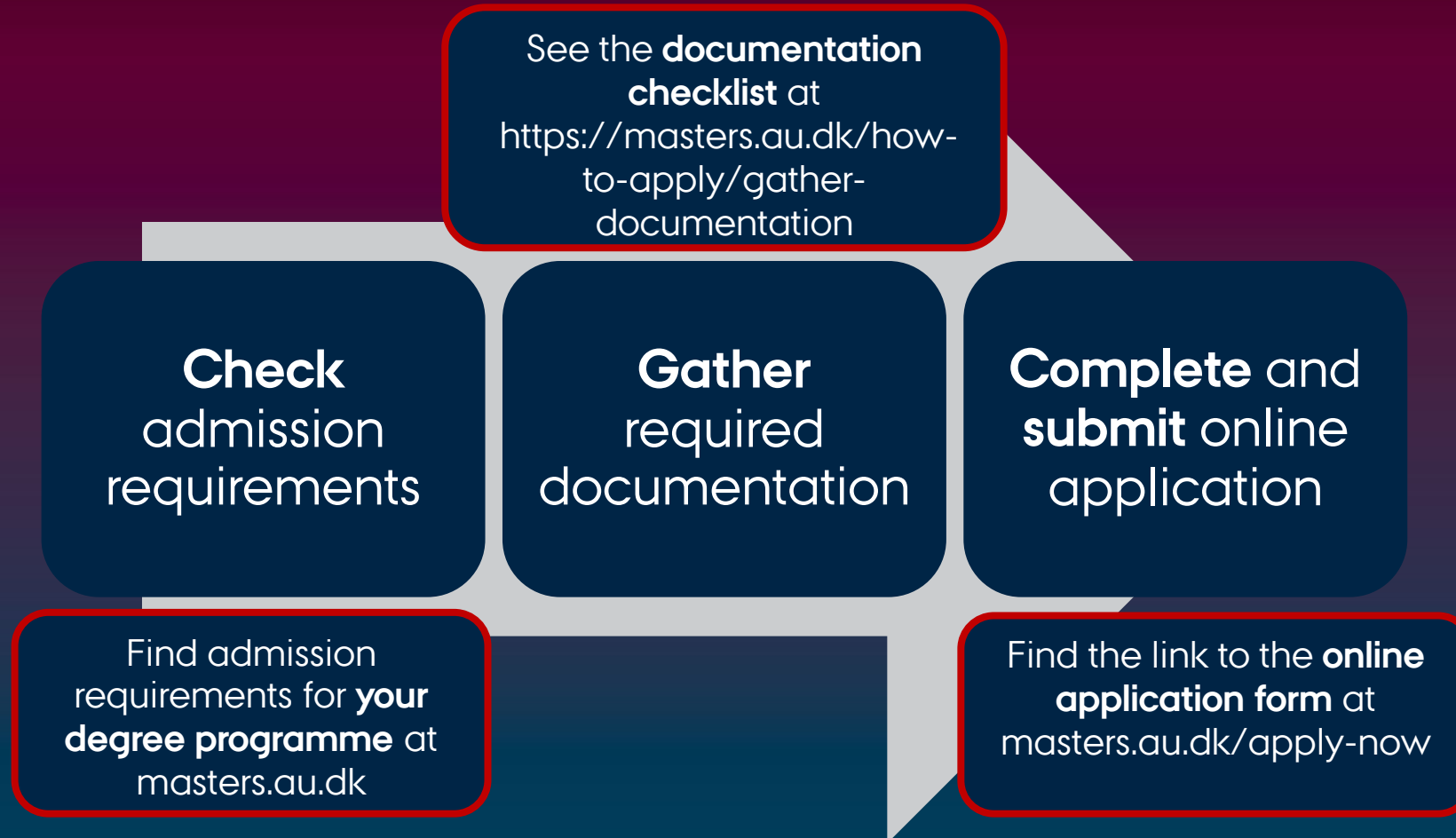
Geoscience

Mechanical Engineering (MSc in Engineering)

Molecular Nutrition and Food Technology

Technology Based Business Development

PREPARING YOUR APPLICATION



ADMISSION REQUIREMENTS

1: General admission requirement

A relevant and recognised Bachelor's degree equivalent of a Danish Bachelor's degree in length and level.

2: Specific admission requirements

Typically 60 to 90 ECTS within specific areas

3: English language requirement

A test recognised by AU (or eligible for exemption)

ADMISSION REQUIREMENT EXAMPLE: MECHANICAL ENGINEERING

Bachelor's degree

Equivalent to a Danish Bachelor's degree

80 ECTS

60 ECTS Mechanical Engineering

20 ECTS Mathematics within the following subject areas:

- Calculus
- Systems of ordinary differential equations
- Partial differential equations
- Vector differential equations and vector integral equations

SELECTION CRITERIA FOR THE MA IN MECHANICAL ENGINEERING

If there are more qualified applicants than available student places, the selection will be based on the following criteria:

1. Grades from the qualifying degree

2. Grades achieved in relevant subject fields:

- Mathematics Mechanics
- Fluid mechanics Theory of elasticity
- Product development

3. Relevant subject fields (measured in ECTS) besides the ones already included in the specific admission requirements from the previous page

DOCUMENTATION REQUIREMENTS

Rule #1: Only official documents are accepted

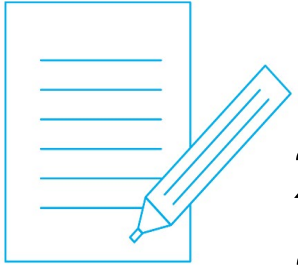
Rule #2: Only documents in English or one of the Scandinavian languages are accepted

Rule #3: All documents must be uploaded to your application

****Exemption:** Course descriptions may be translated by you, if your translation is verified by the issuing university. All other translations must be made and certified by either your home institution or a certified translator.*

APPLICATION CHECK LIST – MANDATORY

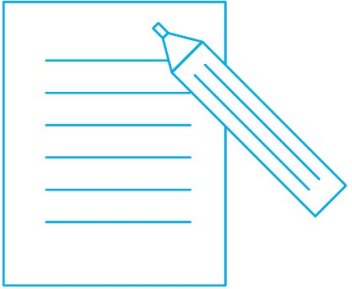
Mandatory for all applicants



1. Bachelor's diploma (always including transcript of records)
2. Course descriptions (most programmes, but not all)
3. Your university's grading scale (and credit system if not ECTS)
4. Documentation of English language qualifications (test result *or* registration copy)
5. Documentation of citizenship (passport *or* ID card)

APPLICATION CHECK LIST – ONLY IF RELEVANT

Only if relevant



6. Receipt for payment of application fee (Non-EU/EEA + Non Swiss students only)
7. Documentation of any non-completed Master's degree programmes
7. Appendix, CV, statement of relevance and other documentation
8. Transferred credits (e.g. exchange): Transcript, grading scale, course descriptions

! Do not upload documentation which is not specifically required.

! Documentation which is not specifically required will not be considered.

COURSE DESCRIPTIONS + APPENDIX

Passed courses + courses to be completed

Brief, official descriptions in English.

Topics covered and learning outcome.



Appendix to application MSc in Mechanical Engineering

This appendix helps the Admission Board evaluate your Bachelor's degree in regard to the admission requirements. Please fill in the appendix and upload it to your application in the application portal.

Personal information

Your full name

Courses passed (or currently taking) as part of your Bachelor's degree

In order to be admitted to the programme, you must have pre-requisites in Mathematics. Please complete the form below specifying how you meet these requirements.

Required subject area	Course title(s)	Credits	Grade	Semester
Calculus				
Systems of ordinary differential equations				
Partial differential equations				
Vector differential and vector integral equations				

If you **do not** have a Bachelor's degree in Mechanical Engineering, please complete the form below specifying which courses from your degree are within the field of Mechanical Engineering.

Required subject area	Course title(s)	Credits	Grade	Semester
Mechanical Engineering subjects				



ENGLISH LANGUAGE REQUIREMENT

Recognised tests

- TOEFL (ibt): 83 points
 - IELTS: 6.5 points overall band score
- ! Test result should not be more than two years old
- Cambridge: check the website

Exemptions

High school diploma or undergraduate degree from the USA, Canada, Australia, New Zealand, Great Britain, Scotland or Ireland.

**<https://masters.au.dk/am-i-qualified-for-admission/english-language-requirements>*

THE ONLINE APPLICATION

1: Pay the application fee

Go to <https://masters.au.dk/apply-now> and click on

> Pay your application fee

2: Create a user profile for the application portal

Go to <https://masters.au.dk/apply-now> and click on



Apply for admission

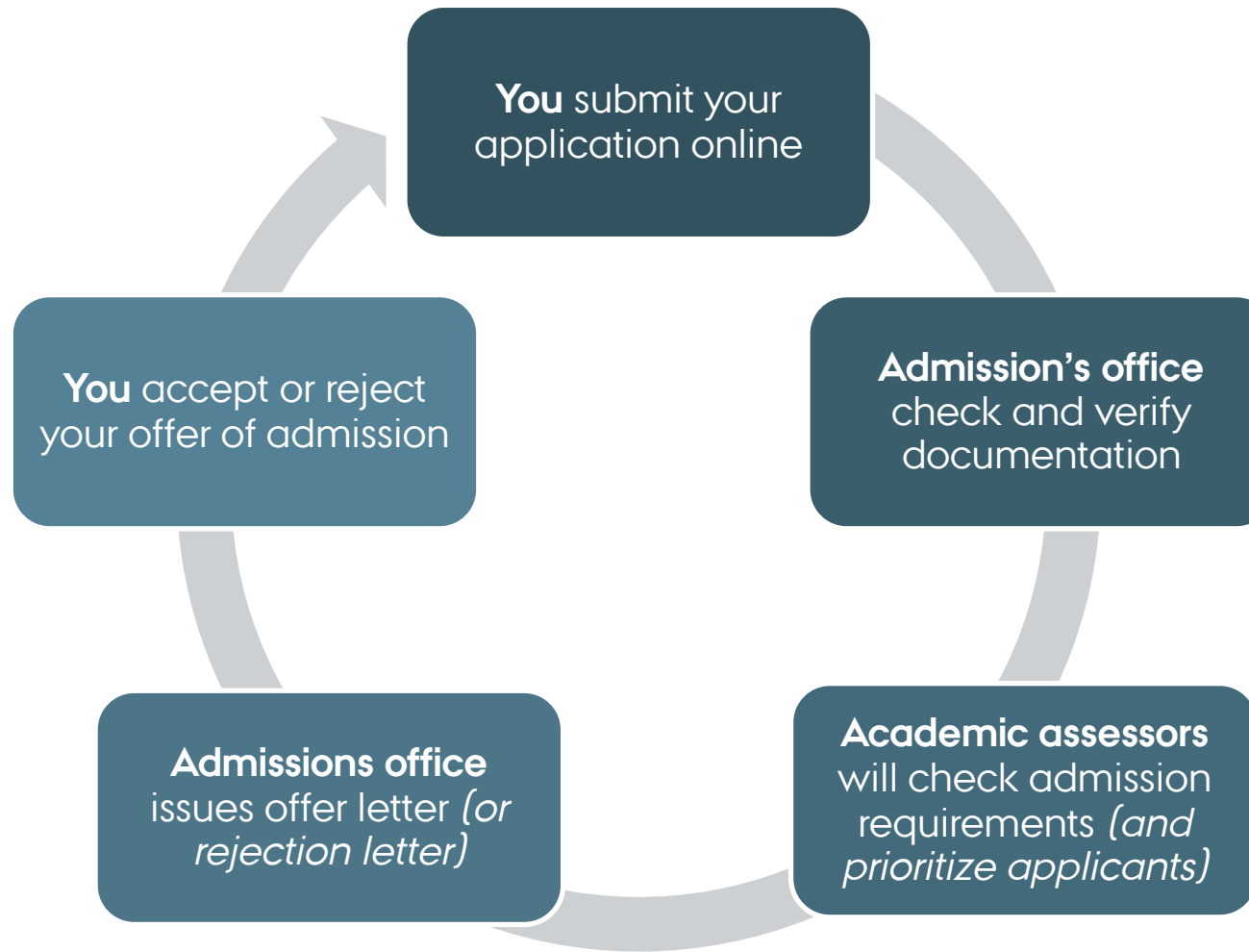


3: Complete and submit application form

Complete all 4 sections and upload required documentation:

- personal information
- educational background (including already completed Master's degrees)
- choose and prioritize up to **3** Master's degree programmes
- other relevant information

YOUR APPLICATION'S JOURNEY



IMPORTANT DATES AND DEADLINES

	Outside EU/EEA	EU/EEA/Swiss
Application deadline	15 September*	15 October
Letter of admission or rejection	Late October	Late October
Acceptance deadline	1 November	10 June
Final deadline: English language test result	1 December	1 January
Final deadline: Bachelor's diploma / certificate	1 December	Late February

SCHOLARSHIP / TUITION FEE WAIVER

OUTSIDE EU/EEA (INCLUDING SWITZERLAND)

**Scholarships and tuition fee
waivers available for**

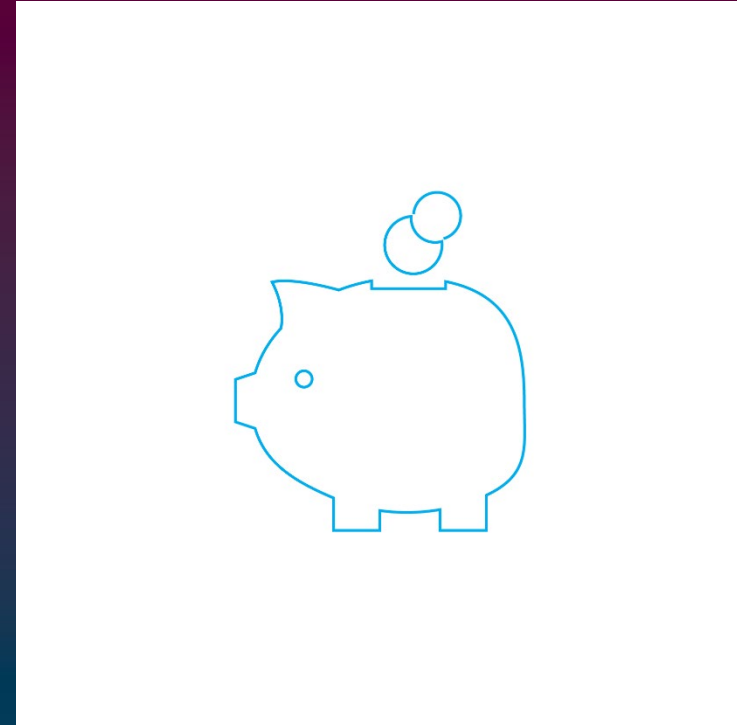
Faculty of Arts

Aarhus BSS

Tuition fee waivers available for

Faculty of Technical Sciences

Faculty of Natural Sciences



CONTACT – AU ADMISSION



ma.admission@au.dk



+45 8715 0720



www.masters.au.dk